



Palm Desert Redistricting 2023

Community Workshop #3

December 6, 2023

Background

Direction to Transition to Five Districts

On June 22, 2023, the City Council unanimously directed staff to take the necessary steps to transition to five single-member districts prior to the November 2024 Election.

Public Education & Outreach Plan

On August 24, 2023, the City Council unanimously adopted the Redistricting Public Education and Outreach Plan

Workshops and Public Hearings

Meeting Videos, Staff Reports, Presentations, & Public Comments are posted to the redistricting website.

For the full schedule, visit:
<https://redistrictpd.org/>

1

September 6, at 6 p.m., Community Workshop #1
(Held at City Hall & via Zoom)

2

September 14 & 28, at 4:30 p.m., Public Hearings #1 and #2
(Held in Council Chambers & via Zoom)

3

October 4 & 16, at 5 p.m., Map Drawing Workshops #1 and #2
(Held via Zoom)

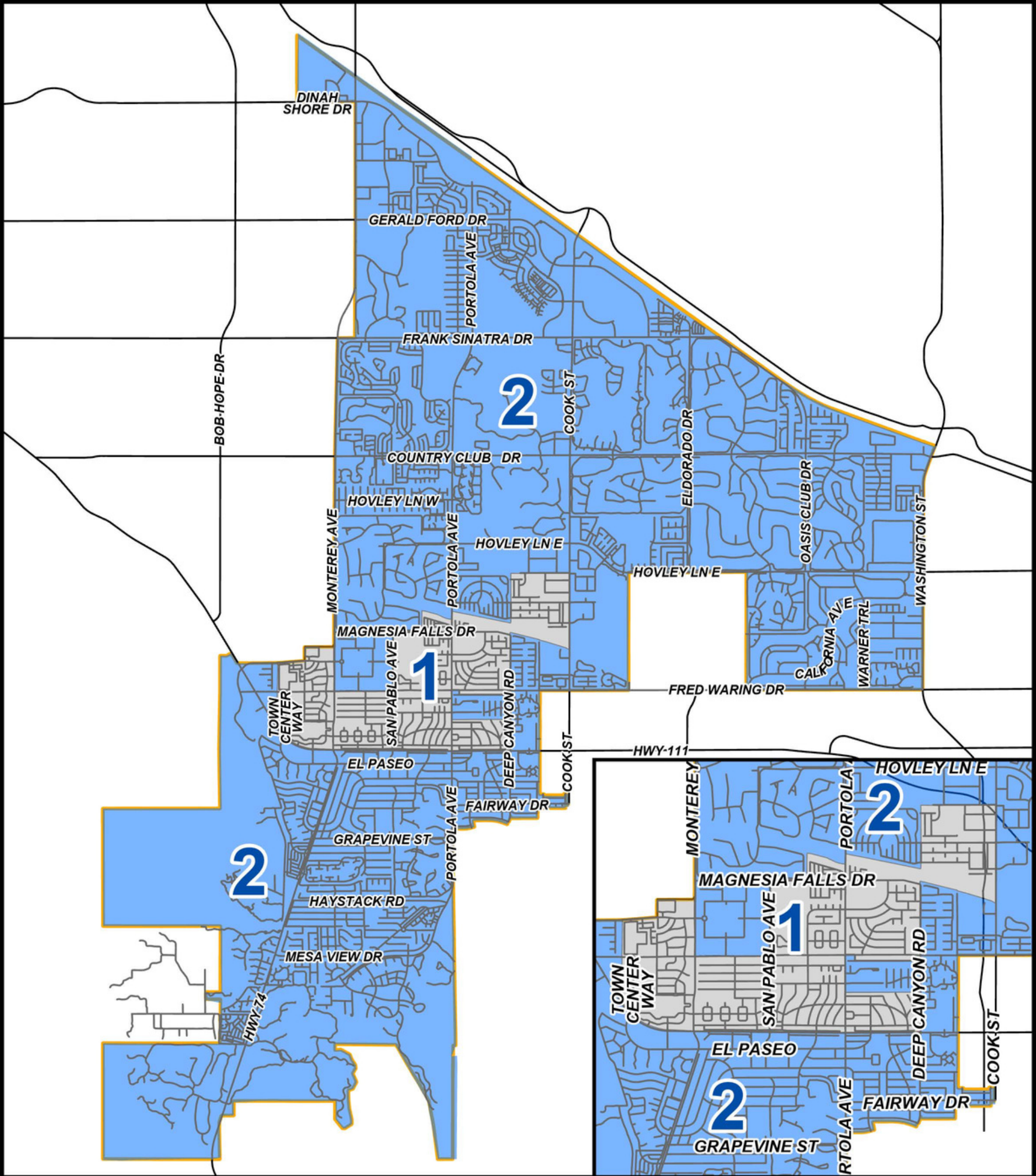
4

November 16, at 4:30 p.m., Public Hearing #3
(Held in Council Chambers & via Zoom)

District Map Drawing Criteria

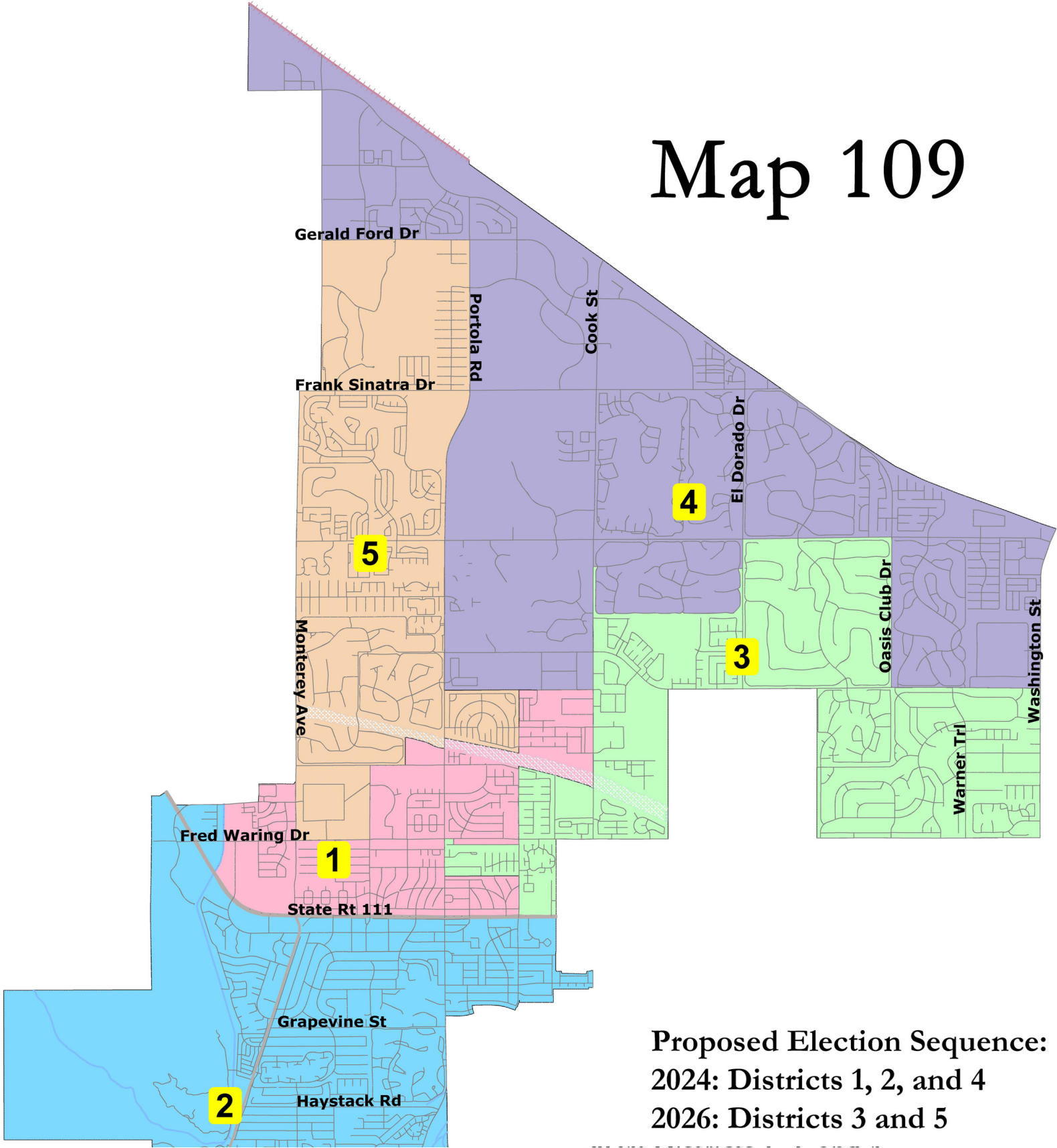
1. Federal Laws	2. California Criteria (in priority order):	3. Other Traditional Redistricting Principles
Equal Population	1. Geographically contiguous	* Respect voters' choice / avoid unnecessary pairing of incumbents
Federal Voting Rights Act	2. Minimize division of neighborhoods and "communities of interest" (Socio-economic geographic areas that should be kept together)	Future Population Growth
No Racial Gerrymandering	3. Easily identifiable boundaries	* Change made pursuant to AB 764, effective January 1, 2024
	4. Compact (Do not bypass one group of people to get to a more distant group of people)	
	Prohibited: "Shall not favor or discriminate against an <u>incumbent</u> , <u>political candidate</u> , or <u>political party</u> ."*	Source: NDC

Existing Two-District Map

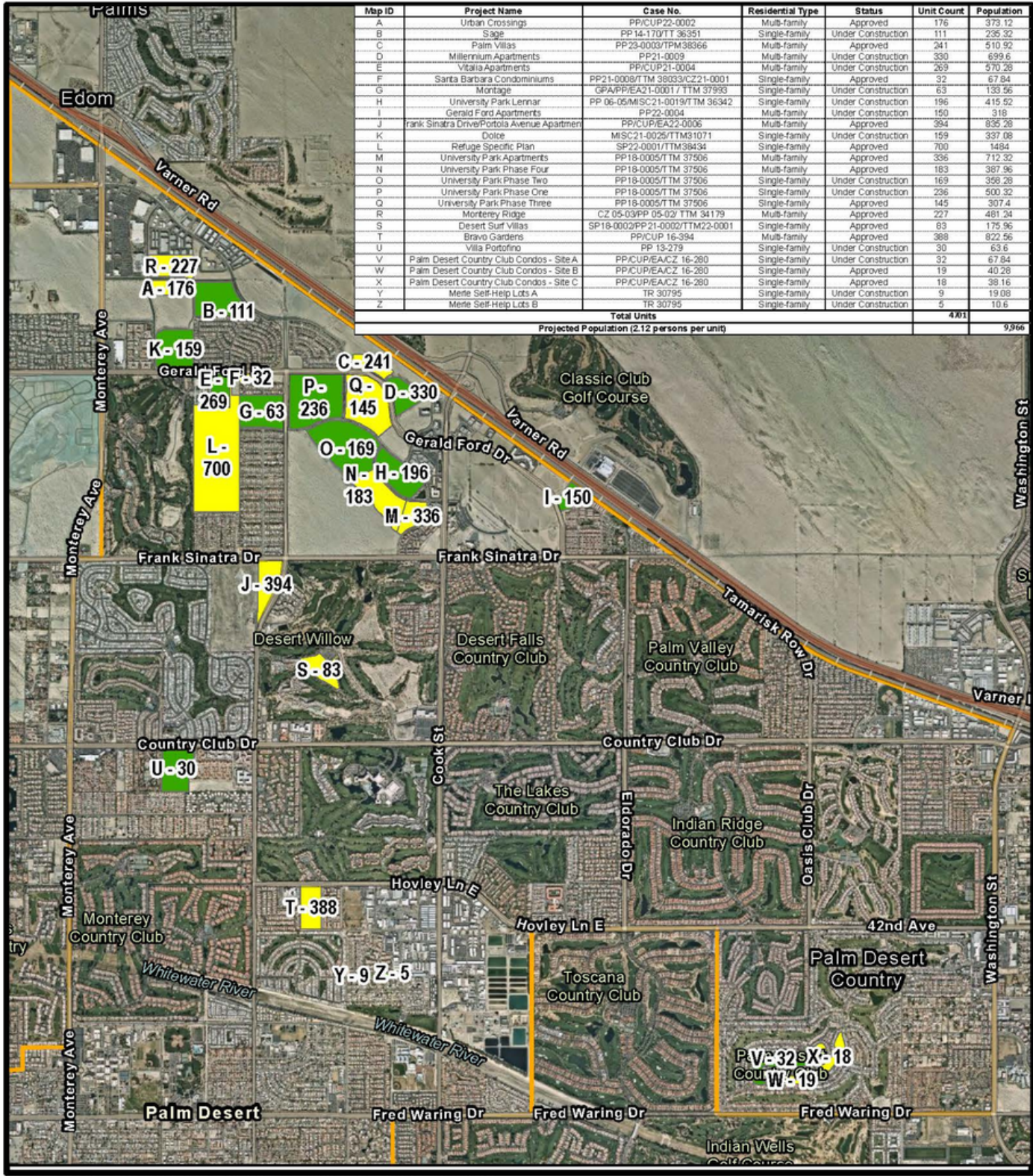


Eligible for Adoption

Map 109



Future Population Growth



Map ID	Project Name	Case No.	Residential Type	Status	Unit Count	Population
B	Urban Crossing	PP/CUP22-0002	Multi-family	Approved	176	373.12
C	Sage	PP14-170/TM 36351	Single-family	Under Construction	111	235.32
D	Palm Villas	PP23-0003/TM38366	Multi-family	Approved	241	510.92
E	Millennium Apartments	PP21-0009	Multi-family	Under Construction	330	699.6
F	Vitana Apartments	PP/CUP21-0004	Multi-family	Under Construction	269	570.28
G	Santa Barbara Condominiums	PP21-0008/TM 38333/CZ21-0001	Single-family	Approved	32	67.84
H	Montage	GP/PP/EA21-0001/TM 37993	Single-family	Under Construction	63	133.56
I	University Park Lennar	PP 06-05/MISC21-0019/TM 36342	Single-family	Under Construction	196	415.52
J	Gerald Ford Apartments	PP22-0004	Multi-family	Under Construction	150	318
K	Frank Sinatra Drive/Portola Avenue Apartments	PP/CUP/EA22-0006	Multi-family	Approved	394	835.28
L	Dolce	MISC21-0025/TM31071	Single-family	Under Construction	159	337.08
M	Refuge Specific Plan	SP22-0001/TM38434	Single-family	Approved	700	1484
N	University Park Apartments	PP18-0005/TM 37506	Multi-family	Approved	356	712.32
O	University Park Phase Four	PP18-0005/TM 37506	Multi-family	Approved	183	387.96
P	University Park Phase Two	PP18-0005/TM 37506	Single-family	Under Construction	169	358.28
Q	University Park Phase One	PP18-0005/TM 37506	Single-family	Under Construction	236	500.32
R	University Park Phase Three	PP18-0005/TM 37506	Single-family	Approved	145	307.4
S	Monterey Ridge	CZ 05-03/PP 05-02/TM 34179	Multi-family	Approved	227	481.24
T	Desert Surf Villas	SP18-0002/PP21-0002/TM22-0001	Single-family	Approved	83	175.96
U	Bravo Gardens	PP/CUP 16-394	Multi-family	Approved	388	822.56
V	Villa Portofino	PP 13-279	Single-family	Under Construction	30	63.6
W	Palm Desert Country Club Condos - Site A	PP/CUP/EA/CZ 16-260	Single-family	Under Construction	32	67.84
X	Palm Desert Country Club Condos - Site B	PP/CUP/EA/CZ 16-260	Single-family	Approved	19	40.28
Y	Palm Desert Country Club Condos - Site C	PP/CUP/EA/CZ 16-260	Single-family	Approved	18	38.16
Z	Merte Self-Help Lots A	TR 30795	Single-family	Under Construction	9	19.08
	Merte Self-Help Lots B	TR 30795	Single-family	Under Construction	5	10.6
Total Units					4,811	9,966
Projected Population (2.12 persons per unit)						9,966

	Map 102b/103b		Map 104		Map 105		Map 109	
	Units	Population	Units	Population	Units	Population	Units	Population
District 5	4,200	8,904	4,200	8,904	2,457	5,209	1,488	3,155
District 4	69	146	69	146	69	146	3,130	6,635
District 3	418	886	418	886	2,161	4,581	69	146

- The City Council may consider future population growth when selecting a final map, provided that federal and state criteria have been met.
- Based on the above chart, Maps 105 and 109 achieve a greater balance in dividing future population growth in north Palm Desert.
- By balancing future population growth in the northern area there may be fewer boundary adjustments following the 2030 Census.

Residential Project Status - June 2023

- Approved Units: 2,942 / Projected Pop. 6,237
- Under Construction Units: 1,759 / Projected Pop. 3,729



VICINITY MAP



Public Participation

- Provide input at an upcoming community workshops or public hearing.
 - Spanish and ASL Interpreters will be available at all workshops.
 - Spanish and ASL Interpreters available upon request for public hearings.
- Submit written comments in-person or via email.
- Subscribe for email updates about upcoming meetings.
- Request a presentation at a civic or community group meeting.

City of Palm Desert
Attn: Anthony Mejia, City Clerk
73-510 Fred Waring Drive
Palm Desert, CA 92260
cityclerk@palmdesert.gov
(760) 346-0611

Upcoming Meetings & Important Dates

For the full schedule, visit:
<https://redistrictpd.org/>

1

November 29, at 6 p.m., Community Workshop #2

- Staff presentation on focus maps; solicit public comment (Location: Palm Desert iHub, in-person only)

2

December 6, at 6 p.m., Community Workshop #3

- Staff presentation on focus maps; solicit public comment (Location: City Hall and via Zoom)

3

December 14, at 4:30 p.m., Public Hearing #4

- Request the City Council select a final map w/adjustments
 - Provide direction on the sequence of elections
- (Location: Council Chamber and via Zoom)

4

January 11, at 4:30 p.m., Public Hearing #5

- Request the City Council adopt a final map
 - Introduce an ordinance enacting five single member districts
- (Location: Council Chamber and via Zoom)

QUESTIONS?

For questions or to schedule a presentation for your community group, please contact:

Anthony Mejia, City Clerk
cityclerk@palmdesert.gov
(760) 346-0611

<https://redistrictpd.org/>